

DAWSONS

Property Professionals since 1925

18/20 STAMFORD STREET STALYBRIDGE CHESHIRE TEL: 0161 338 2292

Website: www.wcdawson.com Email: reception@wcdawson.com



Lodge Lane, Dukinfield, SK16 5JF

Dawsons are pleased to offer for sale this garden fronted two bedroom large mid terraced property. This property has been recently re decorated, and is being sold with no vendor chain. Viewing highly recommended.

The property is well positioned with transport links, the local amenities and schools nearby.

Price £180,000



**CHARTERED SURVEYORS, ESTATE AGENTS
& PROPERTY MANAGEMENT SPECIALISTS**



Lodge Lane, Dukinfield, SK16 5JF

- Garden fronted two bed terraced
- Garden to rear
- No vendor chain
- Close to amenities
- Kitchen/diner
- Newly decorated

GROUND FLOOR

Lounge

11'1 x 13'6 (3.38m x 4.11m)

uVPC double glazed window, uVPC front door, feature fireplace with inset gas fire, laminate flooring, radiator.

Kitchen

11'1 x 13'6 (3.38m x 4.11m)

uPVC double glazed window, fitted with a range of wall and base units, work surfaces, built in hob & oven, stainless steel sink with mixer tap, tiled splash backs, breakfast bar, storage under stairs, radiator, door to rear porch.

Rear porch

7'6 x 4'7 (2.29m x 1.40m)

Double glazed uVPC windows to sides and rear, radiator, storage room with plumbing for washing machine, uPVC door to rear garden.

Downstairs W/C

Fitted with a corner sink and W/C

FIRST FLOOR

Landing

Doors leading to:

Bedroom 1

11'1 x 13'6 (3.38m x 4.11m)

uVPC double glazed window, fireplace, storage cupboard, radiator

Bedroom 2

11'1 x 8'5 (3.38m x 2.59m)

uVPC double glazed window, radiator.

Bathroom

7'9 x 4'6 (2.36m x 1.37m)

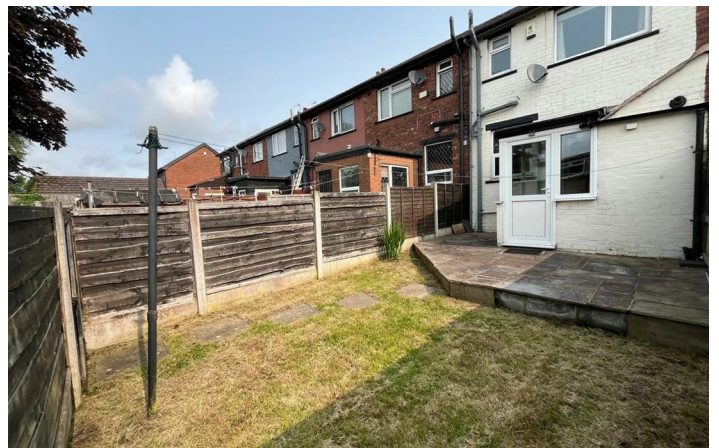
uVPC double glazed window, fitted with a three piece suite comprising a panel bath with shower over, wash hand basin and low level W/C, tiled walls, heated chrome towel radiator.

External

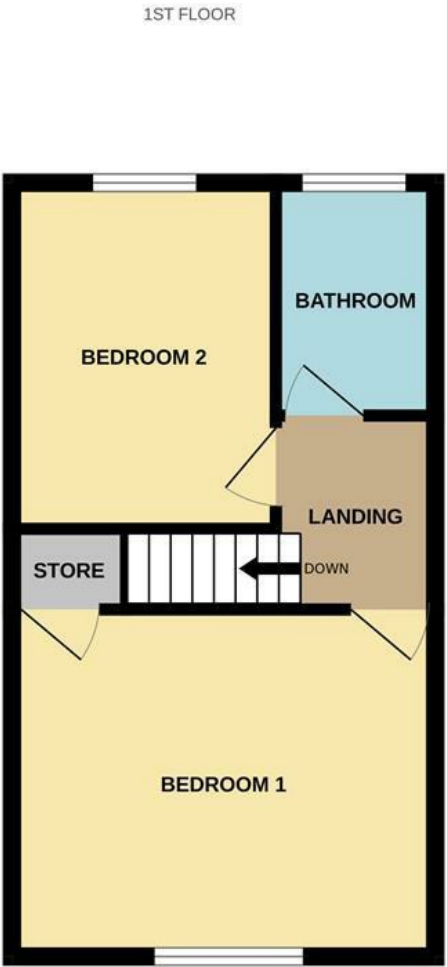
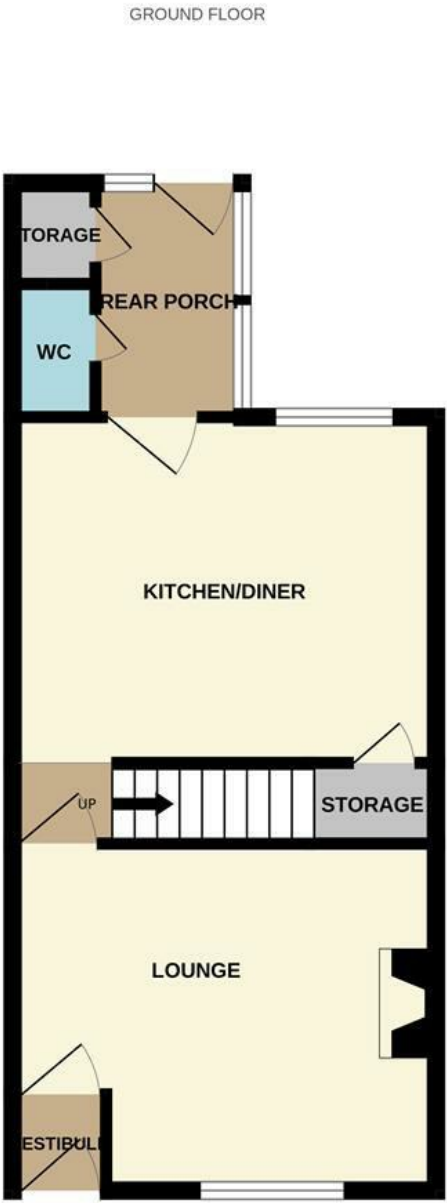
Garden fronted. Enclosed paved rear yard with lawn area.



Directions



Floor Plan



Whilst every attempt has been made to ensure the accuracy of the floorplan contained here, measurements of doors, windows, rooms and any other items are approximate and no responsibility is taken for any error, omission or mis-statement. This plan is for illustrative purposes only and should be used as such by any prospective purchaser. The services, systems and appliances shown have not been tested and no guarantee as to their operability or efficiency can be given.
Made with Metropix ©2025

These particulars, whilst believed to be accurate are set out as a general outline only for guidance and do not constitute any part of an offer or contract. Intending purchasers should not rely on them as statements of representation of fact, but must satisfy themselves by inspection or otherwise as to their accuracy. No person in this firms employment has the authority to make or give any representation or warranty in respect of the property.

